

# MY FLOOR

COLLECTION 2023

Made in  
Germany



Selected decors now  
with special **MOISTURE  
PROTECTION.**

Decor overview	4
Moisture protection	7
Interview with Conrad Huhn	8
Environment	11
MY FLOOR Collection	
<i>Lodge</i>	12
<b>COTTAGE</b>	20
<i>Chalet</i>	32
<b>Villa</b>	40
<b>Residence</b>	48
Accessories	56

## Collection 2023

When elegance meets rustic nonchalance and nautical style meets La Dolce Vita in a stylish, feel-good atmosphere with a solid practicality – and the choice is yours!

The MY FLOOR Collection 2023 unites elegant design and the authentic look of real wood with the advantages of a top-quality, modern laminate floor. It is tough, low-maintenance and durable. Whether you prefer the feel of life by the sea or the urban elegance of a town house, MY FLOOR has just the floor to make you feel good, without compromise on quality or appearance.

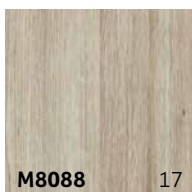
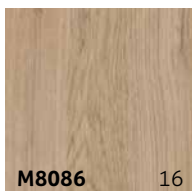
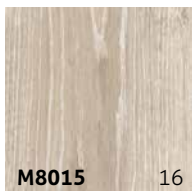
Our decors are original and, in the truest sense of the word, sublime. The different surface structures promise variety. Our decorative imprints create an authentic wood-look which is second to none. All floors from MY FLOOR are extremely durable and have the highest abrasion class rating.

For the sake of the environment, we source our wood from sustainable forests. All of our products are made from natural, renewable raw materials and low-pollution wood-based materials. We keep the manufacturing chain lean and efficient: our energy management is certified and particularly resource-saving.

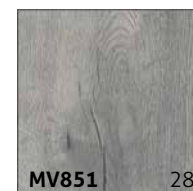
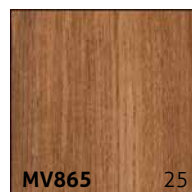
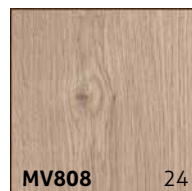
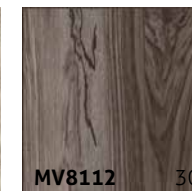
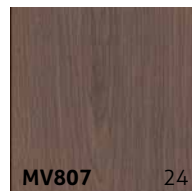
And now: you can enjoy the new MY FLOOR Collection 2023 and be inspired by our living styles.

Made in   
Germany

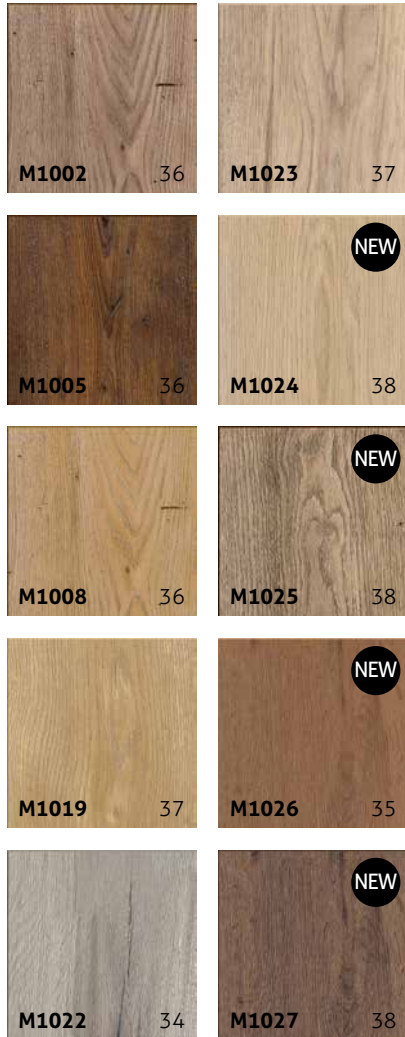
# Lodge



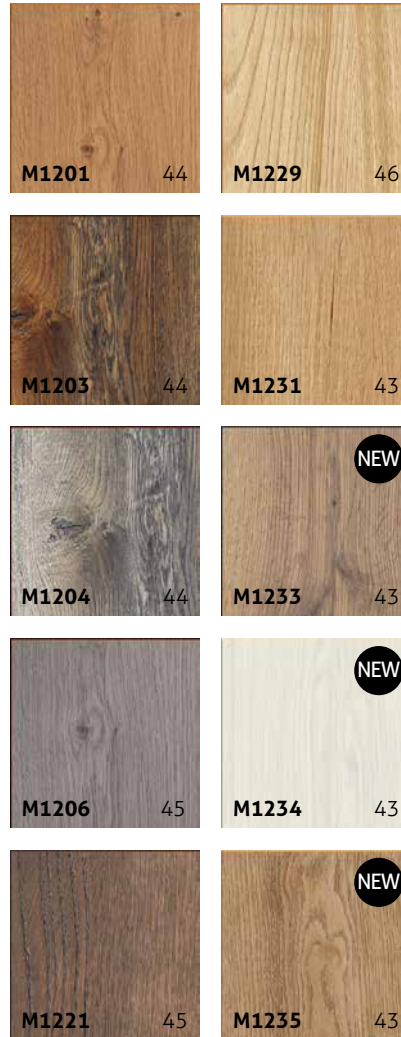
# COTTAGE



# Chalet



# Villa



# Residence







## Our moisture protection

We have made the best even better: high-quality décors from the Chalet, Villa and Residence laminate collections have been optimised in order to withstand moisture penetration even longer. The resin-rich pine from Mark Brandenburg forest and special gluing processes ensure significantly reduced swelling of the laminate flooring.



The natural product is particularly suitable for children and pets who are in frequent contact with the laminate flooring. It can easily forgive a mishap or two.



Laminate flooring is usually to be cleaned by means of a damp wipe. The floors with moisture protection can be easily cleaned with a damp mop.



Like all wood-based products, this laminate flooring will react to the moisture and expand or contract accordingly. Although designed for improved resistance to water and moisture, it is not waterproof and excessive wetting and standing water should be avoided.

**Suitable** for rooms with high humidity.

**Not suitable** for outdoor areas, rooms with permanently high moisture load, e.g. shower cubicles, saunas and rooms with floor drains.

## An eye for detail and the big picture

Conrad Huhn has been at SWISS KRONO TEX for 26 years and as Flooring Production Manager, he and his team ensure that production runs smoothly in the manufacture of MY FLOOR floors. He gave us a brief glimpse of his average day:

**As Production Manager, you must have a lot to coordinate and so much to keep an eye on. What does this all consist of for you?**

We produce between 170,000 m<sup>2</sup> and 215,000 m<sup>2</sup> of floors every day; that's an impressive quantity of ecologically sustainable floors for healthy living. 7 floor production systems alone have to be coordinated for the various products. Added to this, there is tool management and tool technology. In addition, goods inwards and inventory management for semi-finished and finished goods must of course be monitored. Our team consists of 130 employees. As a result, everything is very well coordinated.

**There's a fairly broad range of different laminate flooring – MY FLOOR alone has 5 different collections of varying lengths, thicknesses and widths. How do you manage the many different orders from all round the world?**

The available capacity required to supply our customers has to be continuously coordinated with Sales. The major task is to find a cost-effective balance between the needs of customers and the optimisation of processes. It's a constant challenge not to lose the necessary flexibility, and this keeps us on our toes. By optimising processes, we were able in the last few years to steadily boost the efficiency of the 7 floor production systems.

Every one of our 7 floor production systems has its specific technical characteristics – e.g. specialising in entry level products up to 8 mm or suitable for additional product finishing with footfall sound insulation film, products with and





The daily variety and new challenges associated with the development of new technologies and man management are exciting. It's gratifying to be able to pass on my accumulated experience.

*Conrad Huhn*

without V-shaped joints, special varnish or for especially thick, long or wide panels, etc. This enables us to respond quickly and flexibly to different customer requests and orders and to offer such a large variety of floors.

#### **So what production steps are required to make a panel?**

Round timber from sustainably managed forests is processed into wood fibre and then pressed to form high-density fibreboard (HDF) using a small amount of formaldehyde-free adhesive. The decor is either attached to this substrate or printed directly onto it. Then the panel is sealed with melamine and given a surface texture. These large-format, semi-finished products are then cut to blanks on the panel saws. The profile is then milled to the specified length and width with a special varnish applied to the edge to match the decor, and, if necessary, the floor is given footfall sound protection – depending on the product.

There's a nice illustration of the structure of a panel at the end of this brochure. The automated quality control of the panels is of course very important at the end, before they are packaged.

#### **And now for a few more figures please: What can your floor production systems manage per month on average?**

On all 7 of our floor production systems, the material is changed 950 times a month and the decor 690 times. The thickness is changed 50 times a month, the colour of the V-shaped joint 250 times and the profile 23 times. So there's no danger of boredom setting in with us.



## And without compromise to the environment!

MY FLOOR has made a voluntary commitment to full transparency. This means that we take the environmental sustainability of our products as seriously as maintaining the highest standards of quality and giving outstanding value for money.

Our environmental policies focus on ecological efficiency – for the whole life cycle of any given product that leaves our factory. We process certified raw materials sourced from sustainably managed forests and check the environmental impact of every stage of production. We produce high-quality and very long-lasting laminate flooring, and also take care of eco-friendly disposal. Our Environmental Product Declaration (EPD) makes information on the environmental credentials of our wood-based products freely available. The EPD is awarded by the Institut Bauen und Umwelt and is an internationally recognised ecolabel in accordance with ISO 14025.

And because we want to keep things this way, we give our staff regular training in awareness and knowledge of environmental matters. We are always striving for better – for you and for our environment. As a result, we are proud to have been awarded Blue Angel environmental certification.





# Lodge

Waves rushing. Fresh sea air surrounds you. The sun warms the tip of your nose. Immediately you begin to relax ... Bring that beach holiday feeling into your home with the MY FLOOR Lodge Collection.

The decors in the Lodge Collection look natural and rustic. They exude pure love of life. As free and happy as a day at the beach. Whether light, dark or casual tile design, our designs are extremely diverse. Finding it difficult to make up your mind? Even better, our decors can also be easily combined and harmonise perfectly with one other.

---

**Dimensions:** 1,380 mm × 193 mm

---

**Decors:** 6

---

**Panels per carton:** 8 = 2.131 m<sup>2</sup>

---

**Cartons per pallet:** 56 = 119.32 m<sup>2</sup>

---

**8 mm | AC5/32**







**Rialto Oak**  
Lodge | M8089 | AF | 2-Strip

**Oak Silver**

Lodge | M8015 | MX | 1-Strip

**Mailand Oak**

Lodge | M8086 | AF | 3-Strip

**DaVinci**

Lodge | M8087 | UL | 1-Strip





**Scala Oak**

Lodge | M8088 | AF | 2-Strip



**Wild**

Lodge | M8112 | AF | 1-Strip





Lodge — M8112 Wild



# COTTAGE

A glass of wine, a good book, a cosy fire crackling in the fireplace. What more do you need for a peaceful end to the day? The flickering of the fireplace bathes the room in a beautifully warm light. Your new floor from the MY FLOOR Cottage Collection shimmers subtly and its embossed grain is fine and elegant. This will make you long for the evening, every day anew ...

All Cottage Collection floors exude an incomparable sense of comfort and are full of character. An effect that could only be matched by solid wood floors. And, if a small spark jumps out of the fire, it's no problem at all. Our laminate floors are flame-retardant and hard-wearing.

Page 22–26

**Dimensions:** 1,380 mm × 193 mm

**Decors:** 8

**Panels per carton:** 8 = 2.131 m<sup>2</sup>

**Cartons per pallet:** 56 = 119.32 m<sup>2</sup>

Page 27–30

**Dimensions:** 1,380 mm × 244 mm

**Decors:** 11

**Panels per carton:** 8 = 2.694 m<sup>2</sup>

**Cartons per pallet:** 42 = 113.138 m<sup>2</sup>

**8 mm | AC5/32**







NEW

**Opal Oak Nature**  
Cottage | MV8114 | ER | 1-Strip

**Atlas Oak**

Cottage | MV807 | ER | 1-Strip

**Atlas Oak Beige**

Cottage | MV808 | ER | 1-Strip

**Oak Turin**

Cottage | MV854 | AF | 1-Strip







**Bali Teak**

Cottage | MV865 | AF | 1-Strip



**Mango**

Cottage | MV8110 | ML | 1-Strip



**Ballroom**

Cottage | MV8111 | AF | 3-Strip

**Ruby Oak Beige**

Cottage | MV8113 | ER | 1-Strip



244 mm

**Harbour Oak**

Cottage | MV820 | ER | 1-Strip



244 mm

**Harbour Oak Grey**

Cottage | MV821 | ER | 1-Strip



244 mm

**Harbour Oak Beige**

Cottage | MV839 | ER | 1-Strip

**Palmer Spruce**

Cottage | MV849 | UL | 1-Strip

**Petterson Oak Grey**

Cottage | MV851 | ER | 1-Strip

**Petterson Oak Beige**

Cottage | MV852 | ER | 1-Strip





244 mm

**Montmelo Oak Nature**

Cottage | MV856 | ER | 1-Strip



244 mm

**Montmelo Oak Silver**

Cottage | MV857 | ER | 1-Strip



244 mm

**Tormes Oak**

Cottage | MV895 | ML | 1-Strip

**Duero Oak**

Cottage | MV899 | ML | 1-Strip

**Mango Carbon**

Cottage | MV8112 | ML | 1-Strip





COTTAGE — MV8114 Opal Oak Nature





# Chalet

Do you love the rustic alpine atmosphere? Up there in the mountains, everything seems just that bit easier and more original. Enjoying a hearty snack after a long hike. Telling stories until late in the evening and even enjoying a vigorous "Schuhplattler". The high-quality floor from the MY FLOOR Chalet collection takes it all in its stride. It is tough, hard wearing and even forgiving of dancing on the parquet, erm – laminate.

The decors of the Chalet Collection also create a rustic ambience in your home. Combine it, for example, with simple wood furniture, linen and leather, or dare to try an atmospheric mix of antique and modern furniture.

---

**Dimensions:** 1,380 mm × 193 mm

---

**Decors:** 10

---

**Panels per carton:** 6 = 1.598 m<sup>2</sup>

---

**Cartons per pallet:** 56 = 89.49 m<sup>2</sup>

---

**10 mm | AC5/33\***



\* Minimum requirement for the underlay material is CS 60kPa and DL 2 according to EN 16354.





Chalet

NEW

**Vivero Brown**  
Chalet | M1026 | ND | 1-Strip

**Chestnut Beige**

Chalet | M1002 | ER | 1-Strip

**Chestnut**

Chalet | M1005 | ER | 1-Strip

**Chestnut Nature**

Chalet | M1008 | ER | 1-Strip





**Girona Oak**

Chalet | M1019 | ER | 1-Strip



**Arizona Oak Grey**

Chalet | M1022 | ND | 1-Strip



**Cinerea Beige**

Chalet | M1023 | ND | 1-Strip

**Ruby Oak Silver**

Chalet | M1024 | ER | 1-Strip

**Concrete Grey**

Chalet | M1025 | ND | 1-Strip

**Vivero Dark**

Chalet | M1027 | ND | 1-Strip



Chalet — M1026 Vivero Brown

Chalet





# Villa

The villa has been perched on the small Tuscan hill for several centuries. It has seen a lot during this time: happy family celebrations, opulent dinners and romantic candlelight dinners. Its style has hardly changed over time – it has always been timelessly elegant. The MY FLOOR Villa Collection combines this classic elegance with understated glamour that effortlessly enhances every room.

Do you value exclusive quality? Allow yourself to be seduced by the noble wood look of the Villa Collection and create your own space with its stylish beauty. And don't forget that it also makes an impressive statement in a business setting.

---

**Dimensions:** 1,375 mm × 188 mm

---

**Decors:** 10

---

**Panels per carton:** 5 = 1.293 m<sup>2</sup>

---

**Cartons per pallet:** 56 = 72.38 m<sup>2</sup>

---

**12 mm | AC5/33\***



\* Minimum requirement for the underlay material is CS 60kPa and DL 2 according to EN 16354.





Villa

NEW

**Lybia Oak Grey**  
Villa | M1233 | ND | 1-Strip

**Atlas Oak Nature**

Villa | M1201 | ER | 1-Strip

**Harbour Oak**

Villa | M1203 | ER | 1-Strip

**Harbour Oak Grey**

Villa | M1204 | ER | 1-Strip





**Timeless Oak Grey**  
Villa | M1206 | ER | 1-Strip



**Pettersson Oak Dark**  
Villa | M1221 | ER | 1-Strip



**Virgin Chestnut**  
Villa | M1229 | AF | 1-Strip

**Opal Oak White**

Villa | M1234 | ER | 1-Strip

**Concrete Nature**

Villa | M1235 | ND | 1-Strip



Villa — M1233 Lybia Oak Grey





# Residence

Say goodbye to the mundane. You will create an extraordinary ambience with our highlight: urban, stylish and graceful at the same time. Residence is our very special collection, our masterpiece. The extra wide and unusually long panels; the authentic, elegant, natural wood look and the excellent quality of this floor speak all for themselves.

Our MY FLOOR Residence Collection will thrill you. It lies in your room, exuding self-confidence, modernity and exclusivity. You won't just walk across the floor, no, you'll swagger. It goes without saying that the floors are robust, not light-sensitive and comfortable to walk on.

---

**Dimensions:** 1,845 mm × 244 mm

---

**Decors:** 10

---

**Panels per carton:** 4 = 1.80 m<sup>2</sup>

---

**Cartons per pallet:** 42 = 75.6 m<sup>2</sup>

---

**10 mm | AC5/33\***



\* Minimum requirement for the underlay material is CS 60kPa and DL 2 according to EN 16354.





NEW

**Mountain Oak Creme**  
Residence | ML1031 | ER | 1-Strip

**Makro Oak Nature**

Residence | ML1008 | ER | 1-Strip

**Makro Oak Brown**

Residence | ML1010 | ER | 1-Strip

**Makro Oak Grey**

Residence | ML1011 | ER | 1-Strip





**Makro Oak Light**  
Residence | ML1012 | ER | 1-Strip



**Highland Oak Silver**  
Residence | ML1013 | ER | 1-Strip



**Highland Oak Titanium**  
Residence | ML1016 | ER | 1-Strip

**Makro Oak Beige**

Residence | ML1018 | ER | 1-Strip

**Makro Oak Light Grey**

Residence | ML1019 | ER | 1-Strip



NEW

**Mountain Oak White**

Residence | ML1032 | ER | 1-Strip



NEW

## Our decor of the year 2023

### Mountain Oak Creme – ML1031

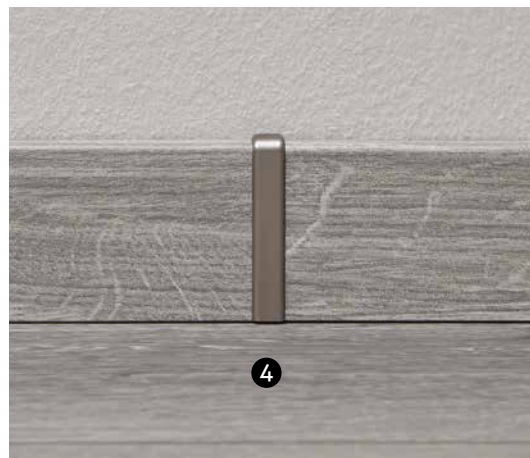
Living harmony at its best: The MY FLOOR Residence collection is perfect for an escape from everyday life. Mountain Oak Cream, our decor of the year, is outstanding flooring. It is what gives a room its unique character and masterfully enhances its effect. At the same time, it is extremely flexible. Because, irrespective of playful country house or urban Bauhaus style, the robust oak always makes a good impression. Only solid wood flooring can achieve this.

A perfect balance of light beige and creamy white. A finely textured grain. Natural resin and knothole inclusions. Extra-long and extra-wide panels. Mountain Oak Cream is love at first sight, but for its part, it is hard to ignite. The high-quality natural flooring is extremely resistant and durable. Let the sparks fly.

## Skirtings & accessories



**SKIRTING BOARD KTEX 1**  
 MDF, for attachment system  
 19 × 58 × 2,400 mm  
**PACKET** 10 pcs  
**PALLET** 56 packets



### ACCESSORIES FOR SKIRTING BOARD KTEX 1

- ① External corner piece (2 pcs per packet)
- ② Internal corner piece (2 pcs per packet)
- ③ End cap (1 × left and 1 × right per packet)
- ④ Connector (2 pcs per packet)

**BOX** 10 packets

Available in these colours:  
 light brown, dark brown, white, silver and stainless steel look



# Skirtings & accessories



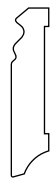
**KTEX F**



**SKIRTING BOARD KTEX F**  
MDF, white, chamfered, paintable  
18 × 80 × 2,400 mm  
**PACKET** 8 pcs  
**PALLET** 35 packets



**KTEX P**



**SKIRTING BOARD KTEX P**  
MDF, white, profiled, paintable  
18 × 80 × 2,400 mm  
**PACKET** 8 pcs  
**PALLET** 35 packets



**CORNER  
PIECE**

**CORNER PIECE FOR SKIRTING BOARDS  
KTEX F AND KTEX P**  
22 × 22 × 82 mm  
**PACKET** 2 pcs  
Available in white decor.



**SKIRTING  
BOARD  
CLIPS**

Leistenklammern  
Clipholder

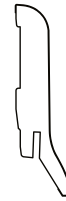
# Other skirtings



**SKIRTING BOARD KTEX 5**  
MDF  
15 × 70 × 2,400 mm



**SKIRTING BOARD KTEX 10**  
MDF  
10 × 58 × 2,400 mm



**SKIRTING BOARD KTEX 11**  
MDF, for attachment system  
21 × 70 × 2,400 mm



**SKIRTING BOARD KTEX 12**  
MDF, for attachment system  
15\*/19.5\*\* × 50 × 2,400 mm



**SKIRTING BOARD KTEX 13**  
MDF, for attachment system  
16 × 58 × 2,600 mm



**SKIRTING BOARD KTEX 14**  
MDF, for attachment system  
17 × 70 × 2,600 mm



**SKIRTING BOARD KTEX 15**  
MDF  
16 × 80 × 2,600 mm



**SKIRTING BOARD KTEX 16**  
MDF  
15 × 78 × 2,400 mm



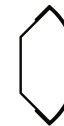
**SKIRTING BOARD KTEX 17**  
MDF  
18 × 40 × 2,400 mm



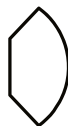
**SKIRTING BOARD KTEX 18**  
MDF, for attachment system  
13.5\*/19\* × 40 × 2,400 mm



**SKIRTING BOARD KTEX 19**  
MDF, for attachment system  
18 × 90 × 2,400 mm



**SKIRTING BOARD KTEX 20**  
MDF  
17 × 17 × 2,400 mm



**SKIRTING BOARD KTEX 21**  
MDF  
12 × 12 × 2,400 mm



**SKIRTING BOARD KTEX 22**  
MDF  
16 × 16 × 2,400 mm



**SKIRTING BOARD KTEX 23**  
MDF  
6 × 25 × 2,600 mm



**SKIRTING BOARD KTEX 24**  
MDF  
4 × 45 × 2,400 mm

\* Covered distance from wall w/o clips.

\*\* Covered distance from wall with clips.

Different quantities available by prior arrangement.

# Insulation underlays



## BASIC

Foam-based

25,000 × 1,000 × 2 mm

**1 PACK** 4 rolls = 100 m<sup>2</sup>

**1 PALLET** 40 rolls



## BASIC PLUS

Foam-based with flat laminated PE foil

25,000 × 1,000 × 2 mm

**1 PACK** 4 rolls = 100 m<sup>2</sup>

**1 PALLET** 40 rolls



## PREMIUM SOUND

PU-based with foil lamination

8,500 × 1,000 × **1.8 mm**

**1 PACK** 1 roll = 8.5 m<sup>2</sup>

**1 PALLET** 40 rolls

Meets the minimum requirements for collections with abrasion class 33. ✓



## SUPERIOR SOUND

PU-based with foil lamination

5,500 × 1,000 × **2.8 mm**

**1 PACK** 1 roll = 5.5 m<sup>2</sup>

**1 PALLET** 40 rolls

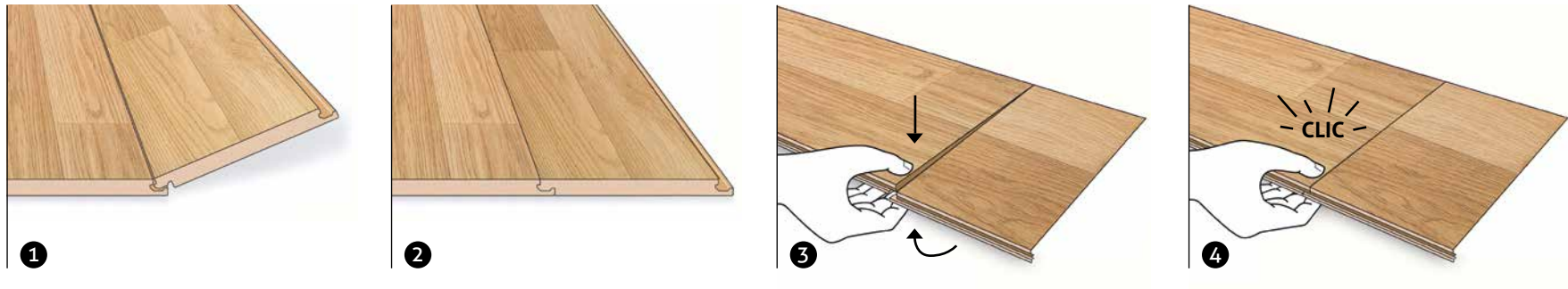
Meets the minimum requirements for collections with abrasion class 33. ✓

## Panel construction

The panels for our laminate flooring are made up of at least four sturdy layers. These guarantee the durability and excellent quality of MY FLOOR. This is how we create long-lasting floors for all requirements.



- A** The upper surface of the flooring features a particularly wear-resistant overlay protection film.
- B** The overlay protection film is pressed together with the individual, hardened decorative film to form a hard-wearing surface.
- C** The base layer is a wood fibreboard.
- D** On the underside of the base board, a moisture-resistant stabilisation film ensures the structural stability of the MY FLOOR laminate flooring.



The CLIC system makes laying this floor child's play: with just one finger, panels lock audibly into place. Simply unpack, lay, click and finish – without the least exertion or any additional tools.

- ✓ even easier to lay
- ✓ 50% time saving
- ✓ no hammer, push block or pull bar required
- ✓ safe and robust
- ✓ can be walked on immediately

For more laying tips, we recommend our YouTube videos at ► [video.my-floor.com](https://video.my-floor.com)



**AC 5/32** A laminate floor's resistance to wear is given as an abrasion class, e.g. AC 5. Here, the number 5 indicates that it will not show signs of abrasion for a considerable length of time. The wear class figure indicates the level of use for which the laminate is suitable. 32 represents average commercial use and 33 is for heavy commercial use.

**AC 5/33**

Floors with these symbols have the following properties:



These panels have a 45° bevelled edge all the way round. Putting them together creates a V-shaped groove, which replicates the character of natural wooden floorboards.



These panels have a special surface structure.



Decors with this symbol are antistatic.



Decors with this symbol have got a special Moisture Guard.

Outstanding features of all MY FLOOR products:



All floors use the CLIC system. Simple to lay with no need for a hammer, tapping block and crowbar. Safe and stable, you can walk on them right away.



Safe and stable, you can walk on them right away.



Low flammability.



Easy-care and durable.



Highly resistant to cigarette butts.



Not light-sensitive.



Stain-resistant.



Resistant to wear.



Made from natural, renewable materials.



Comfortable to walk on.



Suitable for use over underfloor heating.

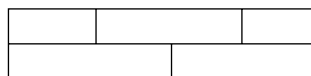


Hard-wearing and pressure resistant.

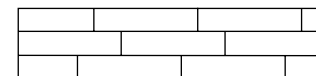
Layout of the surfaces:



1-Strip



2-Strip



3-Strip

## Lodge

8 mm | AC 5/32

Dimensions: 1,380 mm x 193 mm  
 Panels per carton: 8 = 2.131 m<sup>2</sup>  
 Cartons per pallet: 56 = 119.32 m<sup>2</sup>



## COTTAGE

8 mm | AC 5/32

Dimensions: 1,380 mm x 193 mm / 244 mm  
 Panels per carton: 8 = 2.131 m<sup>2</sup> / 2.694 m<sup>2</sup>  
 Cartons per pallet: 56 = 119.32 m<sup>2</sup> /  
 42 = 113.138 m<sup>2</sup>



## Chalet

10 mm | AC 5/33

Dimensions: 1,380 mm x 193 mm  
 Panels per carton: 6 = 1.589 m<sup>2</sup>  
 Cartons per pallet: 56 = 89.49 m<sup>2</sup>



## Villa

12 mm | AC 5/33

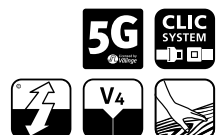
Dimensions: 1,375 mm x 188 mm  
 Panels per carton: 5 = 1.293 m<sup>2</sup>  
 Cartons per pallet: 56 = 72.38 m<sup>2</sup>



## Residence

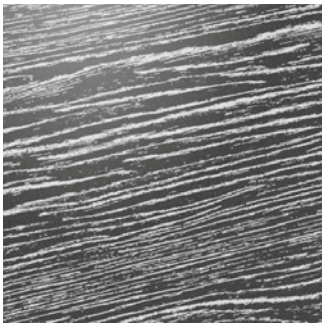
10 mm | AC 5/33

Dimensions: 1,845 mm x 244 mm  
 Panels per carton: 4 = 1.80 m<sup>2</sup>  
 Cartons per pallet: 42 = 75.6 m<sup>2</sup>



**Legal information**

Contents by SWISS KRONO TEX GmbH & Co. KG, Wittstocker Chaussee 1, 16909 Heiligengrabe.  
 Pictures can differ from original product.



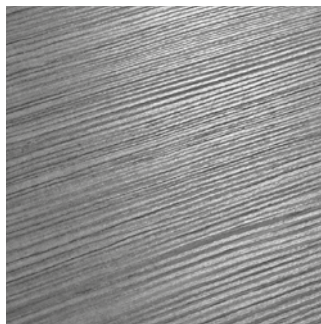
**AF AUTHENTIC FLOOR**  
naturally living wood structures



**ER REGISTERED EMOSS**  
genuine wood appearance due to consistence between pattern and embossing



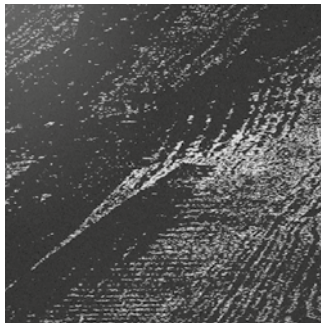
**ML MATT LOOK**  
with a waxed look & feel



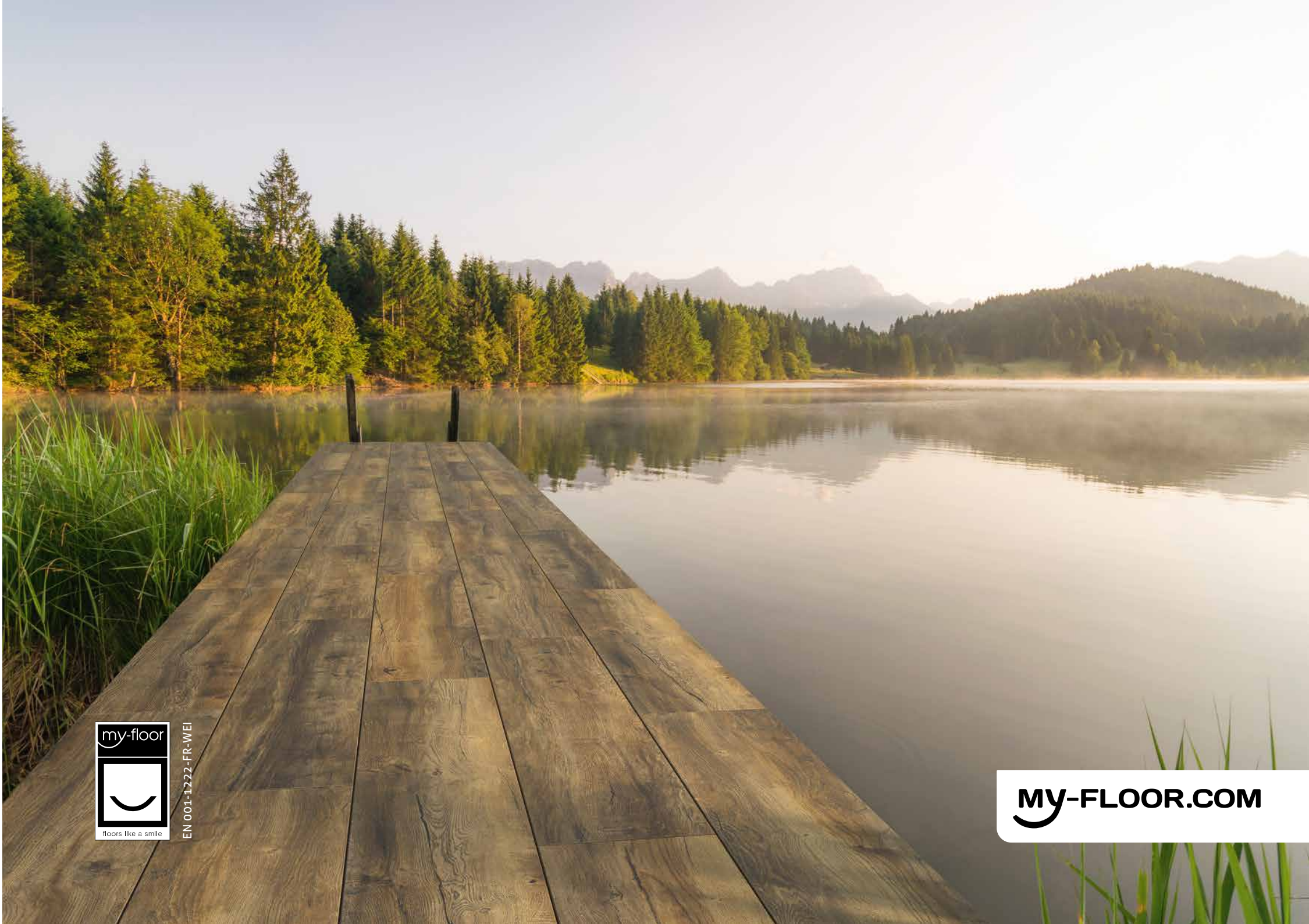
**MX MATRIX**  
deep structure embossing with typical wood matt/gloss contrast



**ND NATURAL DEEP**  
Natural depth with a convincing feel



**UL USED LOOK**  
with apparently signs of wear and tear



EN 001-1222-FR-WEI